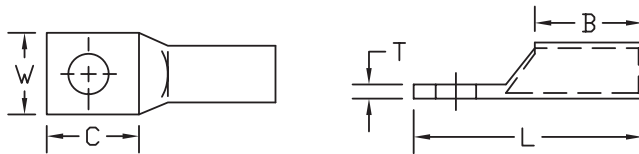


COPPER COMPRESSION LUGS

Standard Barrel - One Hole Tongue with Inspection Window Type BLU-S

- Manufactured from high conductivity seamless copper tubing
- Tin-plated to inhibit corrosion
- Beveled entry for easy cable insertion
- Inspection window to ensure full cable insertion
- Color coded barrels are marked with die index numbers
- Connectors are suitable for voltages up to 35 KV
- 45° and 90° angles are UL listed and CSA certified
- Connectors are UL listed and CSA certified with Penn-Union, Burndy, T&B, Huskie, Greenlee and Versa-Crimp® style tooling



BLU-S

BLU-S DIMENSIONS & INSTALLATION TOOLING INFORMATION

CATALOG NUMBER	COPPER CONDUCTOR SIZE	STUD HOLE SIZE	FIGURE DIMENSIONS (IN.)					INSTALLATION TOOLING				WIRE STRIP LENGTH
			TONGUE WIDTH "W"	TONGUE LENGTH "C"	TONGUE THICKNESS "T"	BARREL LENGTH "B"	OVERALL LENGTH "L"	COLOR CODE	PENN-UNION DIELESS MECHANICAL TOOLS	BURNDY DIE INDEX NO. /TOOL	PENN-UNION DIE CATALOG NO.	
BLU-8S14	8 AWG	#10	.37	.50	.08	.41	1.09	Red	TDM-250 or TDM-500	6	T-49	1/2"
BLU-8S15		1/4"	.37	.56	.08	.41	1.14					
BLU-8S16A		5/16"	.60	.64	.07	.57	1.46					
BLU-8S17A		3/8"	.60	.64	.07	.58	1.52					
BLU-8S18A		1/2"	.70	1.00	.09	.57	1.72					
BLU-6S	6 AWG	#10	.41	.53	.09	.81	1.51	Blue	TDM-250 or TDM-500	7	T-7	15/16"
BLU-6S1		1/4"	.41	.69	.09	.81	1.67					
BLU-6S2		5/16"	.45	.75	.07	.82	1.78					
BLU-6S8		3/8"	.60	.88	.06	.81	1.97					
BLU-6S9+		1/2"	.70	.94	.08	.75	1.88					
BLU-5S	5 AWG	#10	.43	.56	.08	.81	1.61	Blue	TDM-250 or TDM-500	7	T-7	15/16"
BLU-5S1		1/4"	.43	.69	.08	.81	1.73					
BLU-5S2		5/16"	.61	.72	.06	.81	1.77					
BLU-5S3		3/8"	.61	.88	.06	.81	1.92					
BLU-4S	4 AWG	#10	.48	.56	.09	.81	1.61	Gray	TDM-250 or TDM-500	8	T-8	15/16"
BLU-4S1		1/4"	.48	.69	.09	.81	1.67					
BLU-4S10		5/16"	.48	.72	.09	.81	1.76					
BLU-4S2		3/8"	.60	.88	.08	.81	1.97					
BLU-4S4 +		1/2"	1.12	1.12	.13	.83	2.22					
BLU-3S	3 AWG	#10	.53	.56	.09	.88	1.67	White	TDM-250 or TDM-500	9	T-9	1"
BLU-3S1		1/4"	.53	.69	.09	.88	1.80					
BLU-3S2		5/16"	.53	.75	.09	.88	1.86					
BLU-3S3		3/8"	.59	.88	.08	.88	1.98					

BLU-S DIMENSIONS & INSTALLATION TOOLING INFORMATION (Continued)

CATALOG NUMBER	COPPER CONDUCTOR SIZE	STUD HOLE SIZE	FIGURE DIMENSIONS (IN.)					INSTALLATION TOOLING				WIRE STRIP LENGTH
			TONGUE WIDTH "W"	TONGUE LENGTH "C"	TONGUE THICKNESS "T"	BARREL LENGTH "B"	OVERALL LENGTH "L"	COLOR CODE	PENN-UNION DIELESS MECHANICAL TOOLS	BURNDY DIE INDEX NO. /TOOL	PENN-UNION DIE CATALOG NO.	
BLU-2S15	2 AWG	#10	.59	.69	.11	.88	1.73	Brown	TDM-250 or TDM-500	10	T-10	1"
BLU-2S		1/4"	.59	.69	.11	.88	1.73					
BLU-2S1		5/16"	.59	.75	.11	.88	1.86					
BLU-2S2		3/8"	.59	.87	.11	.88	1.98					
BLU-2S10		1/2"	.82	1.13	.10	.88	2.25					
BLU-1S9	1 AWG	1/4"	.67	.56	.11	.62	1.42	Green	TDM-250 or TDM-500	11	T-11	3/4"
BLU-1S		5/16"	.67	.75	.11	.88	1.86					1"
BLU-1S1		3/8"	.67	.87	.11	.94	2.05					1-1/16"
BLU-1S4A		1/2"	.70	1.06	.09	.82	2.03					-
BLU-1/0S19	1/0 AWG	1/4"	.73	.87	.12	.87	2.05	Pink	TDM-250 or TDM-500	12	T-12	1"
BLU-1/0S		5/16"	.73	.87	.12	.88	2.05					
BLU-1/0S1		3/8"	.73	.87	.12	.88	2.05					
BLU-1/0S20		1/2"	.73	1.06	.12	.87	2.25					
BLU-2/0S20	2/0 AWG	1/4"	.81	.81	.12	.94	2.06	Black	TDM-250 or TDM-500	13	T-13	1-1/16"
BLU-2/0S21		5/16"	.81	.81	.12	.94	2.06					
BLU-2/0S		3/8"	.81	.87	.12	.94	2.11					
BLU-2/0S4		1/2"	.81	1.12	.12	.94	2.37					
BLU-3/0S14	3/0 AWG	1/4"	.89	.81	.12	.75	1.94	Orange	TDM-250 or TDM-500	14	T-14	1-1/8"
BLU-3/0S15		5/16"	.89	.81	.12	.75	1.94					
BLU-3/0S		3/8"	.89	.87	.12	1.00	2.25					
BLU-3/0S1		1/2"	.89	1.12	.12	1.00	2.50					
BLU-4/0S19	4/0 AWG	1/4"	1.00	.78	.14	1.00	2.22	Purple	TDM-250 or TDM-500	15	T-15	1-1/8"
BLU-4/0S25		5/16"	1.00	.78	.14	1.00	2.22					
BLU-4/0S		3/8"	1.00	.87	.14	1.00	2.31					
BLU-4/0S1		1/2"	1.00	1.09	.14	1.00	2.50					
BLU-025S4	250 kcmil	1/4"	1.09	.78	.15	1.06	2.34	Yellow	TDM-250 or TDM-500	16	T-16	1-3/16"
BLU-025S5		5/16"	1.09	.78	.15	1.06	2.34					
BLU-025S2		3/8"	1.09	1.13	.15	1.06	2.69					
BLU-025S		1/2"	1.09	1.13	.15	1.06	2.69					
BLU-030S6	300 kcmil	5/16"	1.19	.78	.16	1.06	2.41	White	TDM-500	17	T-17	1-3/16"
BLU-030S7		3/8"	1.19	1.09	.16	1.06	2.75					
BLU-030S		1/2"	1.19	1.09	.16	1.06	2.75					
BLU-030S8		5/8"	1.19	1.69	.16	1.06	3.31					
BLU-035S1	350 kcmil	3/8"	1.28	.88	.17	1.13	2.63	Red	TDM-500	18	T-18	1-1/4"
BLU-035S		1/2"	1.28	1.16	.17	1.13	2.91					
BLU-035S3		5/8"	1.28	1.41	.17	1.13	3.16					
BLU-040S4	400 kcmil	1/2"	1.39	1.19	.19	1.19	3.06	Blue	TDM-500	19	T-19	1-5/16"
BLU-040S		5/8"	1.39	1.44	.19	1.19	3.31					
BLU-045S1	450 kcmil	1/2"	1.45	1.19	.22	1.19	3.06	Blue	TDM-500	19	T-19	1-5/16"
BLU-045S		5/8"	1.45	1.44	.22	1.18	3.31					
BLU-050S2	500 kcmil	1/2"	1.53	1.13	.21	1.38	3.28	Brown	TDM-500	20	T-20	1-1/2"
BLU-050S		5/8"	1.53	1.44	.21	1.38	3.63					
BLU-060S	600 kcmil	5/8"	1.72	1.75	.27	1.38	3.97	Green	TDM-500	22	T-22	1-1/2"
BLU-060S1		1/2"	1.72	1.75	.27	1.38	3.97					
BLU-065S4	650 kcmil	5/8"	1.78	1.75	.27	1.38	3.97	Pink	TDM-500	300	T-300	1-1/2"
BLU-065S5		1/2"	1.78	1.75	.27	1.38	3.97					
BLU-075S	750 kcmil	5/8"	1.91	1.75	.27	1.63	4.31	Black	TDM-500	24	T-24	1-3/4"
BLU-080S	800 kcmil	5/8"	1.96	1.88	.25	1.63	4.53	Orange	TDM-500	25	T-25P	1-3/4"
BLU-100S	1000 kcmil	5/8"	2.17	1.75	.33	1.88	4.75	White	TDM-500	27	T-27P	2"
BLU-100S4		3/4"	2.17	1.88	.33	1.88	4.88					
BLU-150S	1500 kcmil	3/4"	2.69	2.19	.39	2.00	5.47	Green	TDM-500	31	T-31P	2-1/8"
BLU-200S	2000 kcmil	3/4"	3.07	2.31	.46	2.25	5.94	Brown	TDM-500	34	-	2-3/8"

Δ cULus listed

+ Not CSA certified

• For 45° or 90° BENT TONGUES add suffix "-45" for 45 deg. or "-90" for 90 deg. to the catalog number

- Connectors from 8 AWG - 2000 kcmil are UL listed per UL486A-B and CSA certified per C22.2 No.65 for POWER applications
- Connectors from 8 AWG - 500 kcmil are UL listed for grounding, bonding and direct burial applications per UL467
- Connectors from 8 AWG - 250 kcmil are CSA certified for grounding, bonding and direct burial applications per C22.2 No.41